



ORCHARD STEWARDSHIP INCENTIVE PROGRAM GUIDE

Crop Year 2023

This guide contains important information regarding the Blue Diamond Orchard Stewardship Incentive Program. Please read it carefully.

For your convenience, it may be kept as a useful reference. We urge you to do so and refer to it whenever questions arise.

If you have any questions not answered by the information given here, contact your local Regional Manager or call the Member Relations Department in Salida at (209) 545-6225.

Earn a Financial Return on your Stewardship Investment



TABLE OF CONTENTS

OSIP INTRODUCTION AND IMPORTANCE TO BLUE DIAMOND GROWERS.....	2
OSIP PARTICIPATION REQUIREMENTS AND CONTACT INFORMATION.....	4
NEW APPLICANTS	6
CALIFORNIA ALMOND STEWARDSHIP PLATFORM (CASP)	6
BEE FRIENDLY FARMING CERTIFICATION (BFF)	8
CARBON FOOTPRINT ASSESSMENT.....	10
RETURNING APPLICANTS	12
ONLINE APPLICATION FORM	14
FAQS	16

WHAT IS THE BLUE DIAMOND ORCHARD STEWARDSHIP INCENTIVE PROGRAM?

The Blue Diamond Orchard Stewardship Incentive Program (OSIP) is a set of best practices around orchard management, environmental issues, occupational health and safety, and community investment. The activities involved are selected by Blue Diamond to document the high level of performance executed by our members on these issues and thereby communicate that standard to the marketplace, government officials, and other relevant parties.

A financial incentive is provided to encourage participation and to acknowledge the investment required by members, which we are calling the “Orchard Stewardship Incentive Program” (OSIP). The core element is the California Almond Stewardship Platform (CASP) of the Almond Board of California. This program is a science-based program of best practice information designed to optimize almond orchard management while minimizing risk of negative environmental and social impacts. Extensive grower input went into the program development to ensure it reflects the practical realities of almond farming in California. Likewise, the Blue Diamond program is called the Orchard Stewardship Incentive Program to emphasize that it is grounded in practical, daily orchard management.

The OSIP is an annual program and participants must submit materials every year they are planning to participate. The time spent is greatest in the first year of participation and is estimated to be approximately one hour after the first year to update and resubmit materials.

WHY IS THIS PROGRAM IMPORTANT TO OUR GROWERS AND THE COOPERATIVE?

The Orchard Stewardship Incentive Program ensures the best access to key markets and customers for Blue Diamond. In that way, the cooperative can continue to generate the leading annual return for Member-growers. Customers increasingly demand their suppliers use verified sustainable farming practices and are committed to sourcing sustainably farmed ingredients. Consumers are increasingly interested in the story of where and how their food is grown and desire to purchase products which reflect their own concern for the environment.

By demonstrating leadership in this Blue Diamond:

- Remains competitive
- Has openings for new sales conversations with potential customers seeking sustainability offerings
- Is in the best position to negotiate higher prices
- Gets the highest return on investment

The Blue Diamond Orchard Stewardship Incentive Program enables us to share positive stories, backed by credible information, to communicate to customers and consumers how our almonds are responsibly produced in our fields and our facilities.

IS THIS PROGRAM MANDATORY?

No, the Orchard Stewardship Incentive Program is not mandatory. It is a voluntary program that will help the cooperative remain competitive. We are encouraging as many Member-growers to get involved as possible. The more that enroll in the program, the greater ability Blue Diamond will have to leverage this advantage, ultimately resulting in better returns.

WHO IS ELIGIBLE FOR THE PROGRAM?



All current Member-growers who own or farm on land with a Blue Diamond contract are eligible to participate. 100% of farmed Blue Diamond almond acres across all subcontracts must qualify to receive the monetary incentive.

WHAT DOES ORCHARD STEWARDSHIP MEAN?

Blue Diamond Growers believes that what the world calls “sustainable agriculture” is rooted in the practical, daily care that farmers invest in stewarding their orchard for the future of their families and their communities. The activities promoted as sustainable should result, in the long term, in orchards that are more efficient, financially profitable, better for regional air and water resources, and with soil which will remain healthy and viable for generations to come. This is reflected in the name “Orchard Stewardship Incentive Program.”

WHAT ARE THE LEVELS FOR THE 2023 ORCHARD STEWARDSHIP INCENTIVE PROGRAM?

Our program has two levels: **Double Diamond** and **Triple Diamond**. Complete the requirements for each level to receive your corresponding Blue Diamond Incentive Payment. The diagram below describes the levels of the program: The Blue Diamond Orchard Stewardship Incentive Program may require working with multiple organizations. See pages 6-11 for more information:

Orchard Stewardship Incentive Level Requirements and Payments	
Double Diamond Full completion of the CASP assessment 	Triple Diamond Full completion of the CASP assessment + Bee Friendly Certification + Carbon Footprint Assessment 
1. CASP Assessment Completion: <ul style="list-style-type: none"> a. Orchard Setup b. Business Management c. Orchard Practices Base Pmt: \$750 plus \$.005/pound	1. CASP Assessment Completion: <ul style="list-style-type: none"> a. Orchard Setup b. Business Management c. Orchard Practices 2. Bee Friendly Certification 3. Carbon Footprint Assessment Base Pmt: \$1,000 plus \$.01/pound

RESOURCES TO ACHIEVE TRIPLE DIAMOND STATUS:

USDA Climate-Smart Farming Grant:

In 2023, Blue Diamond was awarded a grant from the USDA for \$45 million over the course of 5 years to support growers implementing climate-smart farming activities. The grant will provide free seed and/or plant material and an implementation incentive to plant cover crops or conservation cover in your orchard. Grant applications will open up in Spring 2024 for planting in Fall of 2024. Please contact csg@bdgrowers.com for more information.



Water for Bees:

Every year also provides growers hydration stations for honey bees during the pollination season at no cost. For more information, contact your Regional Manager or dial (209) 545-6225.

Please note that cover crop must have already been planted in Fall 2023 to achieve Bee Friendly Farming Certification for the 2023 OSIP season.

All documents are due by May 31, 2024 for payment.

BLUE DIAMOND ORCHARD STEWARDSHIP INCENTIVE PARTICIPATION REQUIREMENTS

To properly account for participation and make timely incentive payments, we are requiring the following for those wishing to participate:

- A completed online application (see pages 14 and 15 for more information) with supporting documentation showing completion. The online application is available at: [2023 Online OSIP application](https://qrco.de/2023OSIP) (https://qrco.de/2023OSIP). **Only completed applications will be processed for payment.**
- Must include completed Base Payment Assignment Form(s) if applicable.

Payments Process

- OSIP payments will begin in late January 2024, with subsequent monthly payments through June. Early applications are encouraged to receive early payment.
- Each approved application will receive one payment for the season; the earlier the application is submitted and approved, the earlier the payment will be issued.

Key Program deadlines:

- Blue Diamond: All materials must be submitted by May 31st, 2024.
- Bee Friendly Farming: All materials must be submitted to Pollinator Partnership by April 12, 2024 to achieve Blue Diamond's final deadline.

Estimated Time Requirements:

Below is the estimated time to complete the desired levels. Time requirements will vary by the complexity of each applicant.

Returning Applicants: Less than 1 hour

Double Diamond: 2 to 4 hours

Triple Diamond: 4 to 6 hours

Notable Change for 2023 OSIP:

Carbon Footprint Assessment for Triple Diamond Status

In response to the feedback we received from our growers and Regional Managers, we are introducing significant changes to the way we conduct our carbon footprint assessment in the Triple Diamond tier of OSIP. In prior years we asked participants to log into the Cool Farm Tool and fill out their assessment for the carbon footprint. Now, rather than individually navigating the Cool Farm Tool, you will simply provide the necessary data to Blue Diamond during the application process, and we will input the data into the Cool Farm Tool on your behalf. This not only reduces the administrative load on your end and our Member Relations team but also ensures consistency and accuracy in the assessment process. Please see page 10 for more details about the carbon footprint assessment.

**For more questions or information about local support
contact your Regional Manager**

REGIONAL MANAGERS



Vice President, Member Relations

Mel Machado
(209) 545-6222 – Salida
(209) 531-6352 – Cellular

Director, Member Relations

Ben Goudie
(209) 225-0413



Tehama, Butte, Glenn, Sutter, and Yuba

Christine Ivory, (530) 518-9109



Colusa, Yolo & Solano

Membership Office, (209) 545-6225



Sacramento County, San Joaquin County, North of Hwy 205 & East of San Joaquin River

KC Clendenin, (209) 596-5375



San Joaquin County, West of San Joaquin River & South of Hwy 205 Stanislaus County, North of Tuolumne River & Hwy 132

Justin Elam, (209) 303-7306



Stanislaus County, East of Hwy 99, South of Tuolumne River

Membership Office, (209) 545-6225



Stanislaus County, West of Hwy 99, South of Tuolumne River, South of Grayson & Howard Road's West of San Joaquin River Merced County, North of Merced River & Hills Ferry & Stuhr Roads

Trent Voss, (209) 470-5981



Merced County, South of Merced River & Hills Ferry & Stuhr Roads, North of Hwy 140

Kenny Miyamoto, (209) 323-8454



Merced County, South of Hwy 140 Madera County, North of Avenue 12, Firebaugh Blvd, Avenue 7½, & W. Nees Avenue

Carla Youngblood, (559) 240-0906



Madera County, South of Avenue 12, Firebaugh Blvd, Avenue 7½ & W. Nees Avenue, Fresno County, North of Hwy 201/Avenue 400, North of Conejo Avenue & Kamm Avenue, West of Derrick Avenue

Ashley Correia, (559) 356-1584



Fresno County, South of Hwy 201/Avenue 400, South of Conejo Avenue & Kamm Avenue, East of Derrick Avenue, Tulare County, Kings County, & Kern County

Anthony Scudder, (559) 470-9731



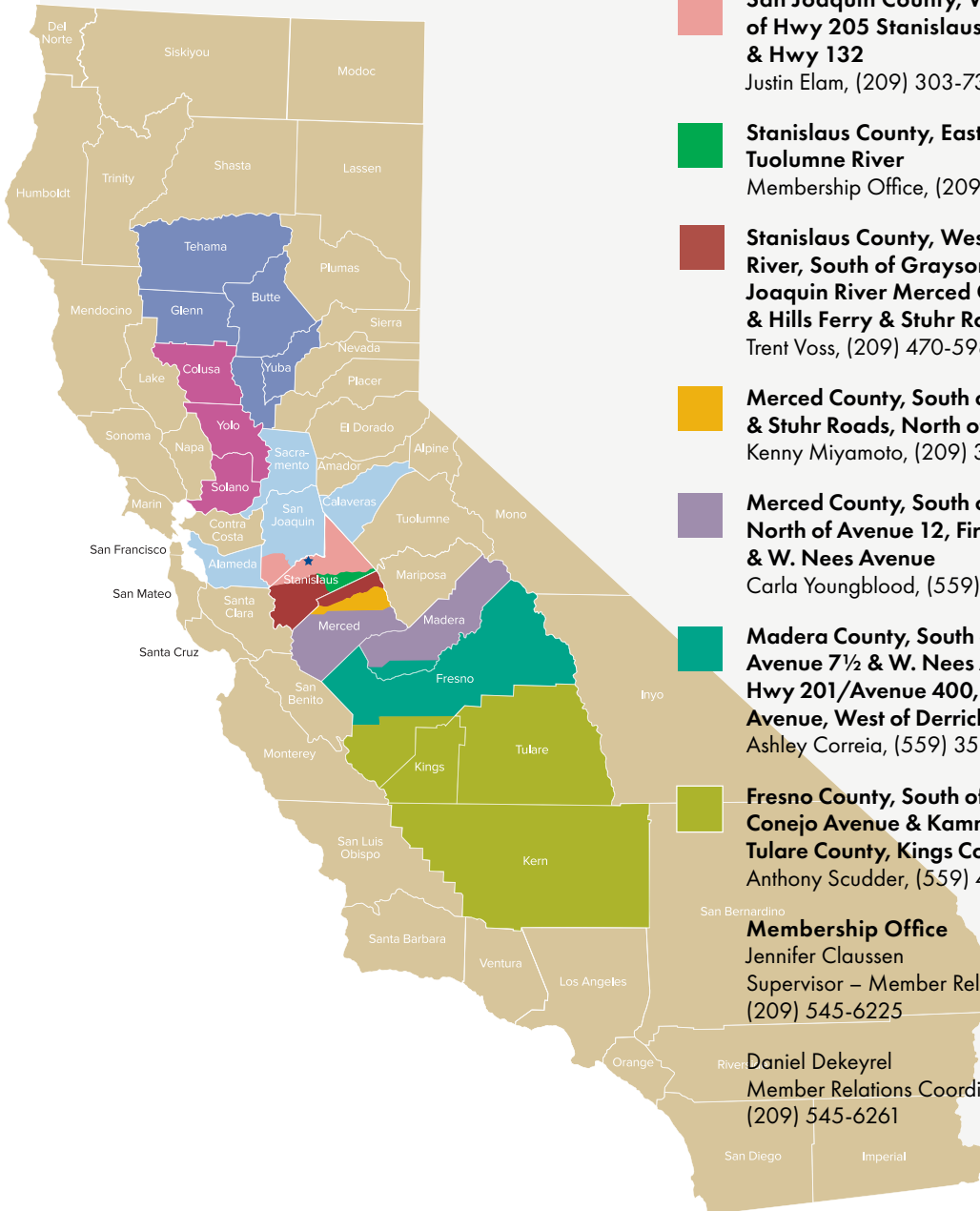
Membership Office

Jennifer Claussen
Supervisor – Member Relations Administration
(209) 545-6225



Daniel Dekeyrel

Member Relations Coordinator
(209) 545-6261



NEW APPLICANTS

Welcome to the Blue Diamond Orchard Stewardship Incentive Program (OSIP)! Thank you for participating in our voluntary program. The Orchard Stewardship Incentive Program ensures the best access to key markets and customers for Blue Diamond. The next 6 pages give a detailed overview of how to participate in the OSIP program, namely through taking the CASP assessment, enrolling in Bee-Friendly Farming (BFF) certification, and taking a carbon footprint assessment. Remember, there are two incentive levels (Double and Triple Diamond). Double Diamond only requires a complete CASP assessment, while Triple Diamond requires the CASP assessment, BFF certification, and the carbon footprint assessment.

As you work through the program and assessments, our Regional Managers are available to support you as questions arise that are not answered in this guide.

ALMOND BOARD OF CALIFORNIA CASP MODULE INFORMATION:

Blue Diamond Growers is partnering with the Almond Board of California by using the California Almond Stewardship Platform (CASP) to aggregate grower sustainability information. CASP is a data-generating program that can be used to share aggregated data with our customers and consumers.

Please go to www.almondstewardship.org and establish an account in the CASP system. Once setup, you can then begin each module and complete at your own pace.

Please refer to the Almond Board Quickstart Guide for more information on cloning data from one orchard to another orchard, or visit page 12 for returning users.

Upon completing the assessment, click on the "Reports" drop down and select "Assessment Progress Summary." Select the orchard(s) you are submitting to Blue Diamond and click "Export as PDF." Please note that if you are applying to become Bee Friendly Farming Certified (pages 8 & 9), you will be required to provide this summary.

CASP OVERVIEW

SECTION	SUBSECTION	WHAT YOU'LL NEED
Orchard Setup	About the Orchard	<ul style="list-style-type: none"> Knowledge about the orchard: Name, County, size (acres), year planted, varieties Knowledge of pre-planting and planting activities Knowledge of soil type and irrigation systems <p><i>Note: This section captures information that will not change over the life of the orchard and these questions are only asked once during setup.</i></p>
Business Management	Operations Management	<ul style="list-style-type: none"> Knowledge of how the business keeps up to date with legislation and regulations. Used to align CASP to external programs.
	Financial Management	<ul style="list-style-type: none"> Knowledge of how the business manages finances, no numeric details
	Energy Efficiency	<ul style="list-style-type: none"> Knowledge of how the business manages energy, no numeric details
	Workplace Management	<ul style="list-style-type: none"> Knowledge of how employees and contractors are managed, including health and safety
	Communities & Neighbors	<ul style="list-style-type: none"> Knowledge of how the farm interacts with the community
Orchard Practices	Irrigation Management	<ul style="list-style-type: none"> Knowledge of how irrigation decisions are made on the farm and the tools used to make those decisions Knowledge about establishment of your orchard as well as practices used on the farm related to water penetration and salinity
	Nutrient & Soil Management	<ul style="list-style-type: none"> Knowledge of how decisions are made on the farm related to soil fertility, nutrient requirements, and nutrient management
	Yield, Water Applied, & Fertilizer	<p>This section requires numeric data, have the following data available:</p> <ul style="list-style-type: none"> The average kernel yield across all varieties Annual total acre inches of irrigation water applied Annual totals of applied N-P-K Number of removed or replanted acres
	Pest Management	<ul style="list-style-type: none"> Knowledge of general pest management practices on the farm such as IPM, monitoring and strategy, efficacy and safety of control, and pest prevention Familiarity with your farm's management practices for specific pests (e.g., Navel Orangeworm (NOW), peach twig borer (PTB), web-spinning mites, San Jose Scale (SJS), ants, leaffooted bugs and stinkbugs)
	Ecosystem Management	<ul style="list-style-type: none"> Knowledge of the ecosystem features (e.g., water bodies) as well as activities taken at the orchard to promote biodiversity and protect habitat
	Bee Health & Pollination	<ul style="list-style-type: none"> Knowledge of practices implemented on the farm related to bees and pollinators, including arrangements with beekeepers Knowledge of practices related to requirements for Bee Friendly Farming Certification
	Energy Efficiency & Air Quality	<ul style="list-style-type: none"> Knowledge of orchard practices that relate to energy efficiency Knowledge of the management practices affecting air quality, including those used to reduce harvest dust

CASP MODULE SUPPORT

The online support options include:

- Chat plus, powered by Intercom.
That is the chat icon in lower right.
- Provide feedback in the upper right; sends an email to CASP@sureharvest.com

- Email CASP@sureharvest.com

- Phone support (831) 477-7797

For questions regarding problems with the CASP program, we suggest you start a conversation through the support function on the website for

immediate needs which is located on the menu bar at the top and gives you this option:



Or, for technical and practice type questions, you can reach out to the Almond Board of California's Field Outreach Team:

Northern Region, Sacramento Valley

Tom Devol – Senior Manager,
Field Outreach & Education
(530) 570-5558
tdevol@almondboard.com

Central Valley Region, Lodi to Madera

Michael Roots – Senior Specialist,
Field Outreach & Education
(209) 985-2986
mroots@almondboard.com

South Region, Madera to Bakersfield

Gary Castillo – Specialist,
Field Outreach & Education
(209) 402-4650
gcastillo@almondboard.com



POLLINATOR PARTNERSHIP: BFF CERTIFICATION (TRIPLE DIAMOND)

Bee Friendly Farming (BFF) is a certification program from Pollinator Partnership working with growers to help protect, preserve, and promote pollinator health. BFF provides guidelines for growers to promote pollinator health on their lands through helping grower incorporate affordable, simple, science-based guidelines, like offering nutrition and habitats for bees, and integrated pest management strategies. To learn more, visit: www.pollinator.org/bff/bff-us.

WHAT ARE THE CRITERIA TO OBTAIN POLLINATOR PARTNERSHIPS BEE FRIENDLY FARMING CERTIFICATION?

1. Offer forage providing good nutrition for bees on at least 3% of land. Forage can be temporary, including cover crops.
2. Provide bloom of different flowering plants throughout the growing season, especially in early spring and late autumn. There is no minimum land coverage for seasonal bloom.
3. Offer clean water for bees if not inhibited by government mandated water restrictions.
4. Provide permanent habitat for nesting through features such as hedgerows, natural brush, buffer strips, or bare ground. Attempt to have 1% permanent habitat.
5. Practice Integrated Pest Management (IPM); reduce or eliminate the use of chemicals. To learn more, visit: www.pollinator.org/bff/bff-us
6. Pay the annual \$45 fee per certification.
7. Complete the compliance form once every 3 years (audited by the BFF Task Force).

Additional considerations:

- 1) Orchard Locations:
 - If orchards are within a 2-mile radius of the forage (3% of land) and are under the same management conditions, they will qualify under the same BFF certification.
 - If the orchards are outside of a 2-mile radius, then one must apply for a separate BFF certification (and pay a separate fee for each certification).
- 2) Pollinator Partnership requires 6 weeks to review BFF applications, so all materials must be submitted by April 12, 2024 for review to receive certification by May 31 (Blue Diamond submission deadline).
- 3) Monitor contact email. If there are questions regarding your applications, Bee Friendly Farming will reach out for clarification.
- 4) If no response is received within 6 weeks of submission, your application may be denied.

If you completed your Bee Friendly Farming Certification in the 2021 crop year, you will only need to pay the annual fee, as certification is good for 3 years.

RESOURCES TO COVER COSTS ASSOCIATED WITH BFF CERTIFICATION

“USDA Climate-Smart Farming Grant”

In 2023, Blue Diamond was awarded a grant from the USDA for \$45 million over the course of 5 years to support growers implementing climate-smart farming activities. The grant will provide free seed and/or plant material and an implementation incentive to plant cover crops or conservation cover in your orchard. Grant applications will open up in Spring 2024 for planting in Fall of 2024. Please contact csg@bdgrowers.com for more information.

“Water for Bees”

Blue Diamond also provides growers hydration stations for honey bees during the pollination season. For more information, contact your Regional Manager or dial (209) 545-6225.



ALREADY SUBMITTED YOUR CASP SELF-ASSESSMENT AND ARE BEE FRIENDLY FARMING ELIGIBLE? FOLLOW THESE STEPS...

- 1) Visit www.pollinator.org/bff/bff-us apply and create an account to begin. Already have an account? Select “Continue an Existing Application” and login.
- 2) Once an account has been made, select “Add A Farm” on your BFF Certified Profile for new farm applications.
- 3) Complete the “About Your Farm” section. Please provide the best phone number and email address where you can be reached. The Bee Friendly Farming Team will use this information to gather any additional information required to award certification.
- 4) When asked for “Existing Certifications” select “California Almond Stewardship Platform: Upload the CASP Assessment Progress Report PDF for your orchard in “Existing Audit Files.”
- 5) Complete the following questions within “Bee Forage and Habitat.” Files can be uploading by dragging files into the appropriate locations.
 - Upload Pictures* of your Bee Forage
 - Upload Pictures* of your Water Sources
 - Upload Pictures* of your Nesting Habitat
 - Permanent Habitat Acreage
 - Total Habitat Acreage

- 6) Upload your Farm Maps.

Below are best practices for photos and maps to submit:

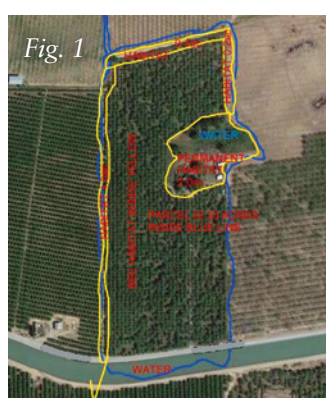
1. Zoomed out map of all farms or orchards. The farms/orchards are to be grouped by “Unique Farms”, as defined by Pollinator Partnership. The example below shows 3 unique properties. Farm 1 and 3 can be considered under one certificate IF they are under the same management practices and within 2 miles of each other. (Fig. 1)

2. Zoomed in map for each farm or orchard. Please outline, measure, and label the following items when possible:

- Cropped acreage/ acreage in production
- Nesting habitat features on site by unique type
- Clean water provided to bees on site
- Forage/ Floral resource features on site by unique type

Note: Maps will not be accepted for certification without nesting, water, and forage features clearly labeled. Appropriate Farm Maps are required for certification.

The examples below represent minimum standards for approved Farm Maps.



- 7) Complete “Confirmation and Payment” section.

HABITAT PHOTOGRAPH RECOMMENDATIONS

1. Photographs should be as high resolution as possible.
2. Take photographs of each type of habitat on EACH property.
3. Include photographs from different times of the year to represent seasonal bloom.
4. Include photographs of ALL water sources.
5. Include photographs of ALL nesting features.
6. Include photographs that demonstrate the approximate location of the habitat. This can include showing where the habitat is in relation to the crop, etc.

BFF CERTIFICATION SUPPORT

For online support with questions about program requirements, uploading materials, or assistance on how to achieve 3% forage habitat, please email the Bee Friendly Farming Team at bff@pollinator.org

Blue Diamond encourages their members to support honey bee health, including forage and water availability. Upon receiving Bee Friendly Farming Certification, please send a screenshot or copy of your certification to Blue Diamond with your application form.

All materials must be submitted to Pollinator Partnership by April 12, 2024 to achieve Blue Diamond’s May 31, 2024 deadline.

CARBON FOOTPRINT ASSESSMENT UPDATE – NEW INPUT METHOD

WHAT IS A CARBON FOOTPRINT AND WHY DO WE CARE ABOUT IT?

A carbon footprint measures the total greenhouse gases emitted and sequestered (captured) as a direct or indirect result of all activities on your orchard. Greenhouse gases include carbon dioxide, methane, and nitrous oxide and other gases defined as having “global warming potential.” Sequestration of carbon typically occurs on orchards through organic matter additions to the soil as done by compost, cover crops, and similar mechanisms.

In California and in key markets like Europe, there’s a growing focus on evaluating companies and products based on their carbon footprints. Often, these assessments treat all almond growers in California the same, not differentiating Blue Diamond growers from our competitors. This is a missed opportunity, as we believe our growers should be of distinction in the marketplace. That is why the carbon footprint assessment in OSIP is crucial. It equips us with the data highlight your stewardship efforts. This recognition not only sets us apart, but also positions us to negotiate increased prices for your almonds and higher returns for members.



What’s New?

In response to the feedback we received from our growers and Regional Managers, we are introducing significant changes to the way we conduct our carbon footprint assessment in the Triple Diamond tier of OSIP. In prior years we asked participants to log into the Cool Farm Tool and fill out their assessment for the carbon footprint. Now, rather than individually navigating the Cool Farm Tool, you will simply provide the necessary data to Blue Diamond during the application process, and we will input the data into the Cool Farm Tool on your behalf. This not only reduces the administrative load on your end and our Member Relations team but also ensures consistency and accuracy in the assessment process.

What To Expect?

When the Triple Diamond level is selected on the online OSIP application, relevant carbon assessment questions will be required to fill out. We at Blue Diamond will then run the assessment using the data you provide directly within Cool Farm Tool. By Blue Diamond directly collecting the data, we can streamline the questions asked and use data already input into the OSIP application, reducing the amount of work an applicant must do. Due to the volume of applications we receive for OSIP, we will be processing these assessments in batches. After we securely submit the assessment data to Cool Farm Tool, the assessment is run and returned, applicants will receive an email with the results. It may take 1-2 months or longer to receive results, as timing will vary based on the number of applications. We appreciate your patience with this process. If you need results sooner, please contact your Regional Manager.

Data Privacy and Usage: Your trust is vital for this new process to work. The information you provide, encompassing both your farm and crop details, will be kept confidential and solely be used to evaluate your carbon footprint for the Orchard Stewardship Incentive Program. We commit to ensuring that data sharing is strictly confined to what is necessary to calculate your orchard(s) carbon footprint.

How Will the Results Be Used?

Each grower's stewardship work is part of a larger picture we can tell customers and consumers. While we always keep individual data confidential, we plan to combine the aggregate carbon footprint findings with the CASP results. This combined data paints a picture of the stewardship work across our almond orchards. It's our way of highlighting the real, positive impact Blue Diamond growers are having. These impacts ensure access to current and potentially new customers and business.



Time Commitment: With your data ready, the entire process shouldn't take more than 30 minutes. Please refer to the table below with the information required to complete the carbon assessment questions.

Below is a table outlining the types of questions and data you will need to complete the carbon footprint assessment. The questions parallel those asked in previous years for the Cool Farm Tool. If you have those data on hand the questions should not take more than 30 minutes to complete. Please reach out to your Regional Manager if you have any questions.

Farm Info	Orchard address (or nearest address)
	BDG Payee Number(s)
Crop Info	Acres assessed & total almond acres farmed
	Average yield/acre (meat pounds)
Crop Residue Info	Hull & shell management
Soil Characteristics	Soil type & pH
Nutrition Program	Nutrients applied with timing, rates, and method(s)
	Manufacture region origin
	Emissions inhibitors
Crop Protection Program	Crop protection applied with rates and methods
Direct Energy Use	Fuel type (diesel, gas, etc.) and amount (gallons)
Irrigation Program	Water source, depth (if groundwater)
	Irrigation system, power source
	Total applied water (acre-feet)
Carbon Questions	Orchard replant info & prior crop info
	Cover crop planting info
Biomass Questions	Trees/acre
	Orchard age & tree circumference
	Tree stock info & age

RETURNING APPLICANTS

The time estimated to complete the OSIP application for returning applicants is less than one hour, for the same status. Please see the steps below to complete if you have already participated in the OSIP season. If you achieved the Double Diamond status last season and you are applying for Triple Diamond status this season, you will need to achieve Bee Friendly Farming certification and complete the carbon footprint assessment questions in the application. Please refer to previous pages for detailed information.

For Double and Triple Diamond status: Complete the CASP Assessment

Please go to CASP: www.almondstewardship.org

- Log in with the credentials used for the previous season
- Clone 2022 crop year answers to current year (2023) – [Reference the ABC Cloning Tips Document](https://qrco.de/2023CASPcloning) (https://qrco.de/2023CASPcloning)
- Review and complete all unanswered questions under the “Orchard Profile”, “Business Management”, and “Orchard Practices” sections
- Export a pdf copy of the “Assessment Progress Summary” showing full assessment completion
- Upload the pdf with the online application [2023 Online OSIP application](https://qrco.de/2023OSIP) (https://qrco.de/2023OSIP)

For Triple Diamond status:

Bee Friendly Farming (BFF) Certification

For new applicants, or if your orchard(s) were certified in 2020 or earlier, you must apply, or re-apply, for BFF Certification. **All applications must be submitted to Pollinator Partnership by April 12, 2024.** *For first time applicants, please refer to page 8 for more details.*

Two options:

1. Click on the BFF link on page 2 of the CASP “Assessment Progress Summary” report.
2. Create an account (or use your existing account if you have one), log in and apply for a “New Farm”: <https://www.pollinator.org/bff-cert/login>

Note: If your orchard(s) were certified during the 2021 calendar year or later, you are only required to submit your most recent proof of certification.

Upload the proof of certification with the online application.

Carbon Footprint Assessment:

Please input all data required into the 2023 OSIP application and Blue Diamond will process your carbon footprint assessment on your behalf. All data will be held confidentially and shared back to you upon completion.



YOU MUST COMPLETE THIS APPLICATION STEP TO RECEIVE YOUR INCENTIVE
The CASP system does not automatically provide us a notice of your completion.

ONLINE APPLICATION FORM

For the 2023 Crop Year, we are continuing the online application available here:

[2023 Online OSIP application](https://qrco.de/2023OSIP)

(<https://qrco.de/2023OSIP>)

If an application is incomplete, your Regional Manager will reach out to you.

Please complete all the required questions in the application. You will need to upload the documents for the specific incentive level you are applying for. At right is a snapshot of the online application initial screen. Continue scrolling down, answering the questions until completion.

Please note that you must submit all information at one time. The data will not be saved if you return to the form. Please click the link below to review the information you will need prior to starting the application:

[Required Document List](https://qrco.de/2023OSIPprep)

(<https://qrco.de/2023OSIPprep>)

Double Diamond:

1. Upload your CASP "Assessment Progress Summary" in PDF format showing full assessment completion (this can be downloaded after you complete your CASP assessment).
 - a. Returning growers will need to click "Accept Changes" under "Data Share".
 - b. Verify the "opt in" and "data share" selections in CASP.
 - c. Verify a "Yes" selection to "Share Contact Info & Submission Status" in CASP.

These items will allow Blue Diamond to verify your participation in the assessment for incentive payment

Once you click "Submit", your application will be sent directly to our Member Relations team for review.

Please reach out to your Regional Manager if you have any questions or issues.

2023 Orchard Stewardship Incentive Program (OSIP) Application

Please note that you must submit all information at one time. The data will not be saved if you return to the form. Please click this link to review information you will need prior to starting the application

<https://qrco.de/2023OSIPprep>

Contact Name*

Contact Phone Number*

--- (212) 123 4567

Contact E-Mail*

Incentive Level*

Double Diamond x v

Upload The Completed "CASP Assessment Progress Report"

Click to upload files, or drag & drop files here

Returning CASP participants will need to click "Accept Changes" under "Data Share"

This helps Blue Diamond verify your participation for incentive payment

Select your answer v

Verify the "opt-in" & "data share" selections in CASP *

This helps Blue Diamond verify your participation for incentive payment

Select your answer v

Verify the "Yes" selection to the "Share Contact Info & Submission Status" in CASP *

This helps Blue Diamond verify your participation for incentive payment

Select your answer v

Triple Diamond:

1. Upload your CASP “Assessment Progress Summary” in PDF format showing full assessment completion (this can be downloaded after you complete your CASP assessment).
 - a. Returning growers will need to click “Accept Changes” under “Data Share”.
 - b. Verify the “opt in” and “data share” selections in CASP
 - c. Verify a “Yes” selection to “Share Contact Info & Submission Status” in CASP
2. Upload your Bee Friendly Farming (BFF) certificate.
3. Complete the carbon footprint analysis questions imbedded in the application.

These items will allow Blue Diamond to verify your participation in the assessment for incentive payment

Once you click “Submit”, your application will be sent directly to our Member Relations team for review.

Please reach out to your Regional Manager if you have any questions or issues.

Incentive Level*

Triple Diamond
X
v

Upload The Completed "CASP Assessment Progress Report"*

Click to upload files, or drag & drop files here

Upload The Bee Friendly Farming Certificate*

Click to upload files, or drag & drop files here

In response to the feedback about Cool Farm Tool, we are collecting data in-house and will be processing the carbon footprint assessment on behalf of the applicant to streamline questions ask and grower time-spend.

The information you provide, encompassing both your farm and crop details, will be kept confidential and solely be used to evaluate your carbon footprint for the OSIP. We commit to ensuring that data sharing is strictly confined to what is necessary for footprint calculation analysis by the Cool Farm Tool.

Please fill out the questions below and refer to the 2023 OSIP Guide for more information:
<https://bluediamondgrowers.com/forms/>



APPENDIX: PROGRAM FAQS

WHAT CROP YEAR DOES THE INCENTIVE PLAN COVER; DOES THIS ONLY APPLY TO THE 2023 CROP?

The Incentive Plan currently covers the assessment of the **2023 crop year (last season)** as that season has been completed and data can be entered into the CASP system in full. All questions should be answered in the context of activities applied to the orchard in 2023 up through harvest. All activities from December 1, 2023 through harvest 2024 will be applied to next year's assessment.

HOW WILL THE PAYMENT PER POUND BE CALCULATED AT THE DOUBLE AND TRIPLE DIAMOND LEVELS?

The payment per pound applies to achievement at the Double and Triple Diamond Level. Production from the contract for the 2023 crop year is what is used for the payment. Verification is required. 100% of farmed Blue Diamond acreage under the main contract must qualify for the highest rank in order to be paid out at that level.

WHEN WILL PAYMENTS BE MADE FOR THE 2023 INCENTIVE?

OSIP payments will begin in late January 2024, with subsequent monthly payments through June.

Early applications are encouraged to receive early payment.

All applications must be submitted to Blue Diamond by May 31, 2024 to qualify for the 2023 OSIP incentive.

IS THIS INCENTIVE PROGRAM ONLY FOR THIS YEAR, OR WILL THIS BE AN ONGOING PROGRAM?

This is the fourth year of what is to be an ongoing program. 2023 is the fourth crop year to be assessed and is open through May 31st, 2024, to complete assessments and receive an Incentive payment from Blue Diamond. You will need to re-submit your assessment results for the 2023 crop year to receive your incentive payment. It is a good opportunity to learn from your 2023 CASP assessment what adjustments you may want to make in order to achieve a higher level of qualification for 2024.

HOW DOES BLUE DIAMOND GET MY CASP INFORMATION AND WHAT WILL BE DONE WITH IT?

Blue Diamond is requiring data opt-in and that Blue Diamond selected as your handler to receive the incentive payment. Blue Diamond only sees **aggregated** assessment information with the rest of our opted in growers. This information is very valuable in answering buyer questions regarding growing practices. Since each of our Member-growers farm independently, this helps us to be able to validate the good sustainable practices that are happening currently. The aggregate survey results serve as a data-based set of facts that we can then use to tell our positive sustainability story. For instance, early results have shown that 99% of Member-growers utilize the services of a California Licensed Pest Control Advisor. Although this may seem like a simple fact, this is a very meaningful statistic that helps us put into context that our Member-growers are committed to the practice of Integrated Pest Management by utilizing qualified experts.

WHAT ABOUT SECURITY, IS MY INFORMATION SECURE?

The California Almond Stewardship Platform (CASP) is a secure platform that has been in operation for over 10 years. It is administrated by a SureHarvest Inc. a sustainability technology leader that utilizes the latest security protocols on their database. The Almond Board of California and Blue Diamond will not see your individual answers, only aggregated totals that appear in reports as analytical survey results. Furthermore, your information is considered a trade practice and is not subject to governmental Freedom of Information Act (FOIA) requests, which means that outside parties have no rights to CASP data even though the Almond Board of California is a federally sanctioned marketing order.

For the carbon footprint assessment, Blue Diamond will only use the data provided to calculate your orchard(s) carbon footprint.

WHAT LEVEL SHOULD I COMPLETE?

Our goal is to encourage as many Member-growers to enroll in the program. It is your choice what level you want to complete. The Double Diamond level has no specific sustainability practice requirements that are needed to complete the work. In essence, at this level all you need to do is complete the assessments.

To reach the Triple Diamond Level, you will need to qualify for the Bee Friendly Farming Certification and take the carbon footprint assessment. Please note that Blue Diamond is offering support through the USDA Climate Smart Farming Grant and Water for Bees to help offset the investment to achieve Triple Diamond status. If you do not meet the requirements, you will not be able to achieve Triple Diamond status.

As a general rule, it should take about 4-6 hours to complete Double Diamond, and 6-8 hours to complete Triple Diamond.

WHAT DOES IT MEAN THAT THE BASE PAYMENT PAYS OUT PER CONTRACT?

The base payment pays out on your main “payee” level of the contract, which is the stand-alone business entity, NOT at the subcontract level. So, for instance, “ABC Orchards contract 51234” is the main “payee” contract

and one base level payment will apply. That contract may have multiple “subcontracts” typically denoted as -1, -2, -3, etc. Those subcontracts will not receive an individual payment. You may assign 100% of the base payment to another contract using the attached form on page 19. If you achieve Double or Triple Diamond, all pounds from the main contract and any subcontracts produced for the 2023 crop year will be used for the per pound payment which is in addition to the per contract base bonus.

WHAT IF I HAVE MULTIPLE BLUE DIAMOND CONTRACTS, CAN I STILL APPLY?

If you hold multiple individual entity contracts (with their own unique payee number) with Blue Diamond each base contract “payee” will be eligible for a unique incentive payment per entity. Many member-growers have different entities, i.e., ABC Farms INC, and another that is ABC Farms Family partnership LP, then those are considered individual and would each qualify for their own base incentive payment, plus production per pound payment at the Double and Triple Diamond levels.

WHAT IF I FARM FOR OTHER GROWERS THAT HAVE A BLUE DIAMOND CONTRACT (AS A RENTER OR LESSEE), CAN I GET PAID FOR ENROLLING THAT ACREAGE?

If you are farm manager or renter of a Blue Diamond contract(s), it is possible for you to perform the Stewardship Incentive work and get compensated for your part. Please contact your Regional Manager for instructions on how to request an assignment of the Stewardship Incentive. For your convenience, an assignment form has been included in this booklet.

DO MEMBER-GROWERS QUALIFY FOR THE INCENTIVE PROGRAM IF THEY HAVE A CONTRACT WITH BLUE DIAMOND, BUT THE ORCHARD HAS BEEN REMOVED OR IS CURRENTLY FALLOWED?

In the case of an orchard that has been removed and currently fallowed, the Stewardship Incentive is not available as there is no orchard to assess. If the orchard was in the ground and farmed for the 2023 season, but has since been removed, then, yes, you could assess for the 2023 crop year.

CAN MY ORCHARD QUALIFY IF IT IS A YOUNG ORCHARD AND NOT YET IN PRODUCTION?

In the case of a young orchard that is less than three years old, and has not delivered production yet, it can be assessed as long as it was farmed during the 2023 season. If this is your only orchard, only a base payment would be available as there was no production in 2023. If it is one orchard of many that you farm, you are encouraged to include it if it was farmed in 2023.

WHO SHOULD WE TALK TO ABOUT OTHER SUSTAINABLE SUPPORT PROGRAMS SUCH AS SOLAR OR COVER CROP SEED, AND DOES BLUE DIAMOND HAVE RESOURCES TO HELP WITH INCENTIVES?

Blue Diamond is working to bring additional resources to our Member-growers in order to support ongoing and improved sustainability practices. We do not typically get involved in products such as solar, but we will seek to bring best practices information when we can.

In 2023, Blue Diamond was awarded a grant from the USDA for \$45 million over the course of 5 years to support growers implementing climate-smart farming activities. The grant will provide free seed and/or plant material and an implementation incentive to plant cover crops or conservation cover in your orchard. Grant applications will open up in Spring 2024 for planting in Fall of 2024. Please contact csg@bdgrowers.com for more information.

Our goal is to have other partner programs in the future similar to our successful 2023 “Water for Bees.” We distributed over 850 bee watering stations at no cost to our growers to promote the best management practice of providing water for bees during the bloom period. This program was sponsored by a private customer of Blue Diamond to enable the adoption of pollinator friendly practices at no cost to the grower or the cooperative.

IS THIS PROGRAM GOING TO BE LIKE OTHER COMMODITY PROGRAMS THAT ARE PROGRESSIVELY MORE DIFFICULT WITH EACH SUBSEQUENT YEAR?

We don’t anticipate this program becoming more difficult in future years. The CASP program is very robust and encompasses all areas of sustainability that we need to assess. Each year, the CASP program gets updated and there may be a few new questions, or questions that have been replaced for greater clarity, but they should not require additional sustainability practices. With the additional Triple Diamond components of Bee Friendly Farming Certification and the carbon footprint assessment, we feel that we have a top tier program that recognizes the current levels of achievement necessary.

AM I GOING TO NEED TO SPEND THE SAME AMOUNT OF TIME NEXT YEAR ON THE PROGRAM AS THIS YEAR?

Actually, after the first season, it should be easier since the setup of the CASP account is often one of the most time-consuming activities in order to get on the platform. You will need to clone over your orchards and modules for the 2023 crop year, but you will not need to re-answer the assessment questions again. If there are updates in CASP, you would only need to address those specific areas changed.



Orchard Stewardship Incentive Base Payment Assignment (CASP)

There is hereby irrevocably assigning the 100% of Crop Year 20_____ OSIP Base Payment from:

Payee #: _____ **Name:** _____

Address: _____

To

Payee #: _____ **Name:** _____

Address: _____

Indicate Base Payment Level Below:

☐ Double Diamond \$750.00

☐ Triple Diamond \$1,000.00

Note: This assignment ONLY applies to the Orchard Stewardship Incentive Base Payment, which supersedes any other assignment on record.

Witness

Date

**Member/Renter/Assignee
(Assignor)**

Date

Witness

Date

**Recipient of Assignment
(Assignee)**

Date

Date

Blue Diamond Growers

Please Note: A signed copy will be returned to you after our acceptance.







4800 Sisk Road, Modesto, CA 95356

Salida: (209) 545-6225 • Sacramento: (916) 446-8368

www.bluediamondgrowers.com