



Blue Diamond's USDA Climate Smart-Grant (CSG): Cover Crops

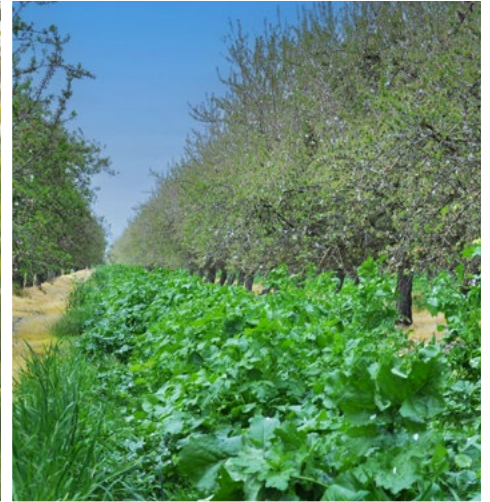


Cover Cropping is a practice of planting a temporary crop in the orchard middles, typically flowering and/or nitrogen-fixing species, after harvest with termination in late winter/early spring.

See USDA NRCS Conservation Practice Standard 340 for more information:

nrcs.usda.gov/resources/guides-and-instructions/conservation-practice-standards

Application opens May 1 – June 30.



Incentive

Blue Diamond is offering **no cost seed and a \$35/acre implementation incentive to cover crop**. The incentive rate is for growers who implement the practice in every or every other row of their almond orchard. **Growers will be approved on a first-come, first-serve basis.**

Qualifications

1. Participation in the Blue Diamond Orchard Stewardship Incentive Program (OSIP) for the 2023 crop year
bluediamondgrowers.com/forms/
2. Registration with the USDA Farm Service Agency (FSA)
offices.sc.egov.usda.gov/locator/app?state=ca&agency=fsa
3. Completed application and subsequent approval from Blue Diamond
4. Proof of Cover Crop Implementation
5. Adherence to all program requirements

Process

A Blue Diamond team member will review submitted applications for completeness. **If approved, growers will receive next-steps guidance from Blue Diamond and then be contacted shortly after by Project Apis m. to begin the cover crop consultation and coordination process.**

Benefits and Other Considerations

Cover cropping may provide several benefits, including: improved pollinator health, improved soil health, water conservation, and reduction of dust.

Where to apply

Apply online at bit.ly/bdg-csg

Reimbursements

The reimbursement process will begin after the project has been implemented and proof of implementation has been completed with Blue Diamond.

Where to learn more

For more information, please review the detailed, CSG guidebook, which can be found on the Blue Diamond Growers webpage: bit.ly/bdg-csg or contact jbains@bdgrowers.com.